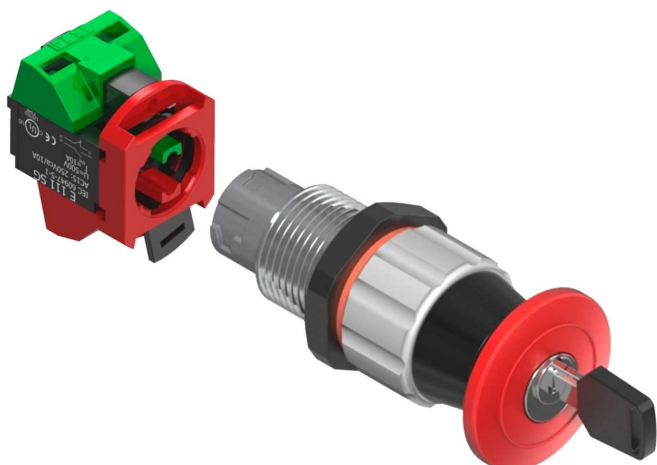


## Botão Cogumelo c/ Chave Yale



### Informações Técnicas:

**Tipo de Proteção:** Montagem em invólucros Ex "d" ou Ex "tb", com furações M22 x 1,5.





**Marcação:** Ex d IIC Gb / Ex tb IIIC Db

**Área de Aplicação:** Zonas 1, 2, 21 e 22.

**Grau de Proteção:** IP-66.

**Temperatura de trabalho:** -50°C a 60°C.

**Rosca:** M22 x 1,5.

TECHNICAL SPECIFICATION			
TYPE OF PROTECTION	Ex "d" - Flameproof Ex "tb" - Dust ignition protection	Explosion proof Dust ignition proof	Ex "d" - Flameproof Ex "tb" - Dust ignition protection
MARKING	Ex d IIC Gb Ex td IIIC Db	Class I, Groups B, C, D Class II, Groups E, F, G Class III	 II 2 G Ex db IIC Gb II 2 D Ex tb IIIC Db
AREA OF APPLICATION	Zone 1 Zone 2 Zone 21 Zone 22	Class I, Div 1 & 2, Groups B, C, D. Class II, Div 1 & 2, Groups E, F, G. Class III	Zone 1 Zone 2 Zone 21 Zone 22
INGRESS PROTECTION	IP66W (W: salt spray)	Type 4X	IP66W (W: salt spray)
TEMPERATURE RANGE	-50°C to 60°C (-40°F to 158°F)	-50°C to 60°C (-40°F to 158°F)	-50°C to 60°C (-40°F to 158°F)
THREAD SIZE	M22 x 1,5 3/4" NPSM	M22 x 1,5 3/4" NPSM	M22 x 1,5 3/4" NPSM
THREAD LENGTH	25mm (Normal) 40mm (Long) 57mm (Extra Long)	25mm (Normal) 40mm (Long) 57mm (Extra Long)	25mm (Normal) 40mm (Long) 57mm (Extra Long)
INSTALLATION	for M22x1.5 THREAD in Ex "d" enclosures : (min. wall thickness : 8 mm engaged thread) in Ex "tb" enclosures : (min. wall thickness : 3 mm engaged thread) for 3/4" NPSM THREAD in Ex "d" enclosures : (min. 5 fully engaged threads) in Ex "tb" enclosures : (min. wall thickness : 3.7 mm engaged thread)	for M22x1.5 THREAD in Ex "d" enclosures : (min. 7 fully engaged threads) in Ex "tb" enclosures : (min. wall thickness : 3 mm engaged thread) for 3/4" NPSM THREAD in Ex "d" enclosures : (min. 7 fully engaged threads) in Ex "tb" enclosures : (min. wall thickness : 3 mm engaged thread)	for M22x1.5 THREAD in Ex "d" enclosures : (min. wall thickness : 8 mm engaged thread) in Ex "tb" enclosures : (min. wall thickness : 3 mm engaged thread) for 3/4" NPSM THREAD in Ex "d" enclosures : (min. 5 fully engaged threads) in Ex "tb" enclosures : (min. wall thickness : 3.7 mm engaged thread)
CERTIFICATE OF COMPLIANCE	 INMETRO CEPEL 97.0007U	 CSA I UL CSA: 2719982 UL: E489210	 ATEX I IECEx Sira 16ATEX1176U IECEx CSA 16.0032U

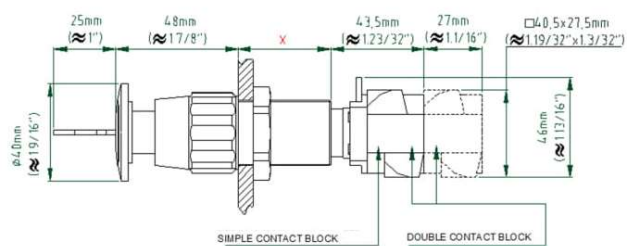
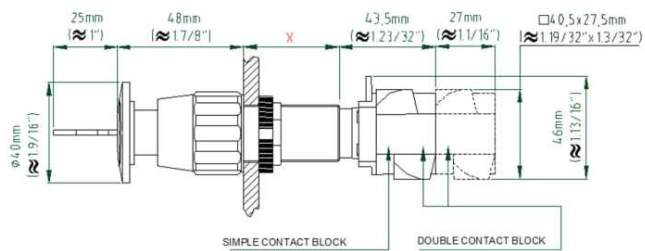
## ELECTRICAL SPECIFICATION

RATED VOLTAGE	Ui 500V	
RATED CURRENT	Ith 10A	
BREAKING CAPACITY FOR AC 15	VOLTAGE	CURRENT
	220V	10A
	380V	7,5A
BREAKING CAPACITY FOR DC 13	VOLTAGE	CURRENT
	24V	2,75A
	60V	1,10A
	110V	0,55A
	220V	0,27A

**DIMENSIONS**

M22 x 1,5

3/4" NPSM



X	
(mm)	(inch)
25mm	≈ 1"
40mm	≈ 1.19/32"
57mm	≈ 2.1/4"

**EXGBEY A + B**

**X** THREAD SIZE

X	
CODE	SIZE
22	M22x1,5
26	3/4" NPSM

**A** THREAD LENGTH

A	
CODE	SIZE
N	25mm
L	40mm
X	57mm

**B** CONTACT BLOCKS



CODE	10	01	11	20	02